



# Let's Get Back to Work

Establishing a Process Framework to Enable  
your Return-to-Work Plans

**Erik Hille**

Solutions Marketing Director



# Agenda

Risks of returning to work

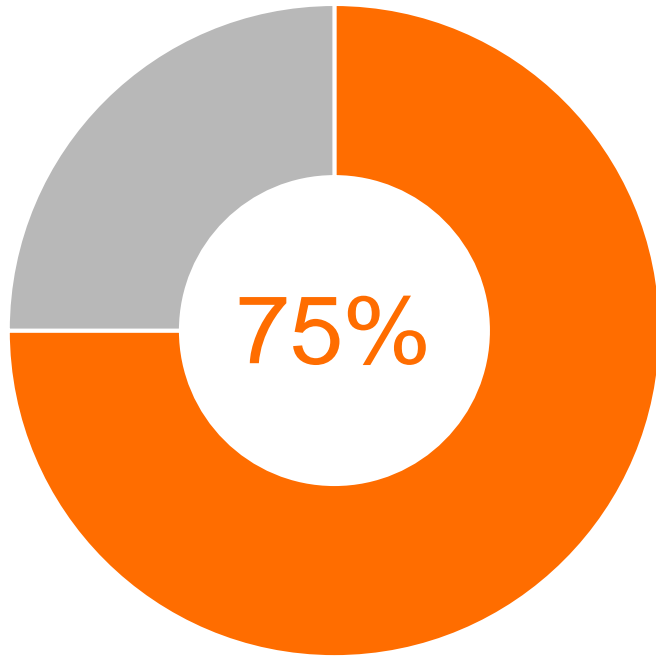
Complicated dynamics for these processes

Where to focus

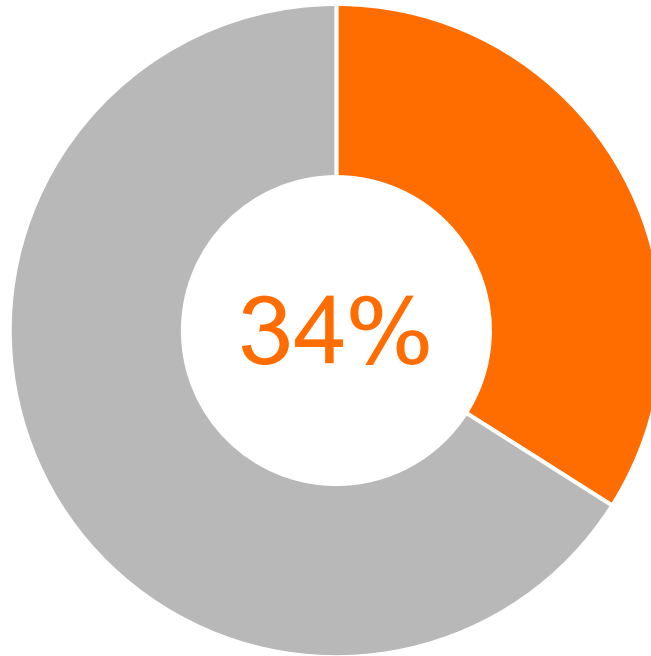
How automation helps

How Nintex can help

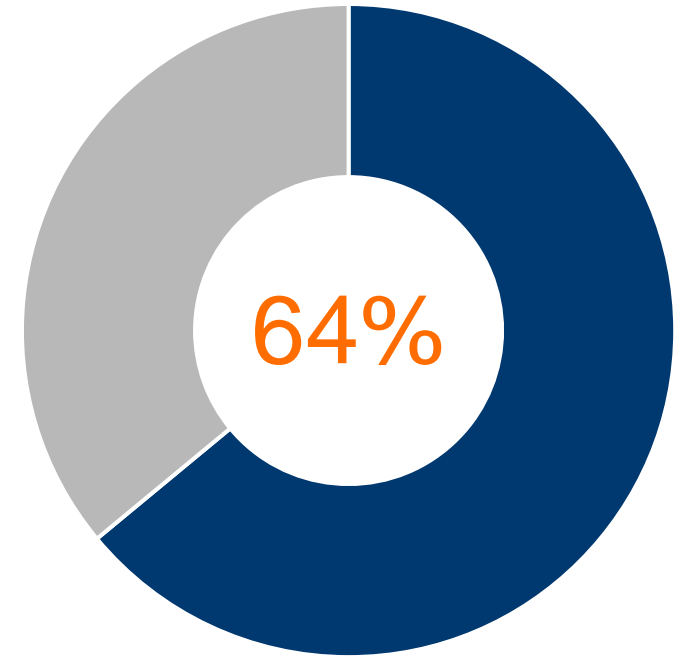
# Returning to work is inherently risky for companies



**Executives** want to return to office at least 3 times per week



**Employees** want to return to the office



**Organizations** planning a return to the workspace

Source: Future Forum Pulse, conducted July 28 to August 10, 2021. Number of respondents = 10,569. Sample sizes by country: USA (5,339), Australia (1,060), France (1,049), Germany (1,050), Japan (1,047), and the UK (1,024)

Source: Deloitte, Return to Work Survey 2021

# pressure to get this right is high



**Employee mobility**  
at all time high



**Federal & Local  
laws** frequently  
change



**Regulations &  
Guidelines** actively  
developing



# How nintex will help us cross the chasm”

**Vaccination  
tracking**

**Incident  
Recording,  
Reporting, &  
Communication**

**Physical  
distancing &  
workspace  
concentration**

**PPE Ordering &  
Distribution**

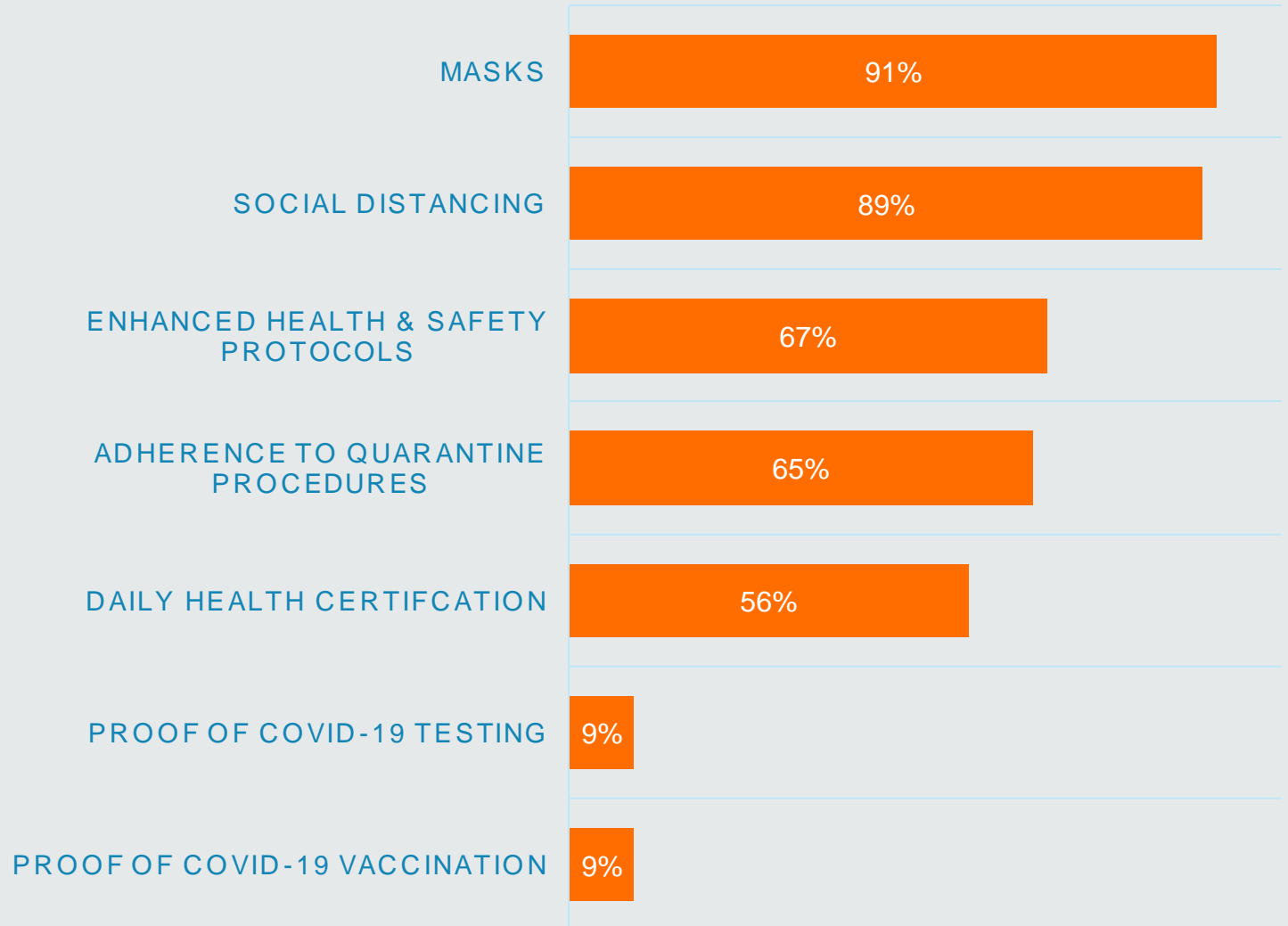
**Cleaning &  
Disinfection**



Based off OSHA guidelines

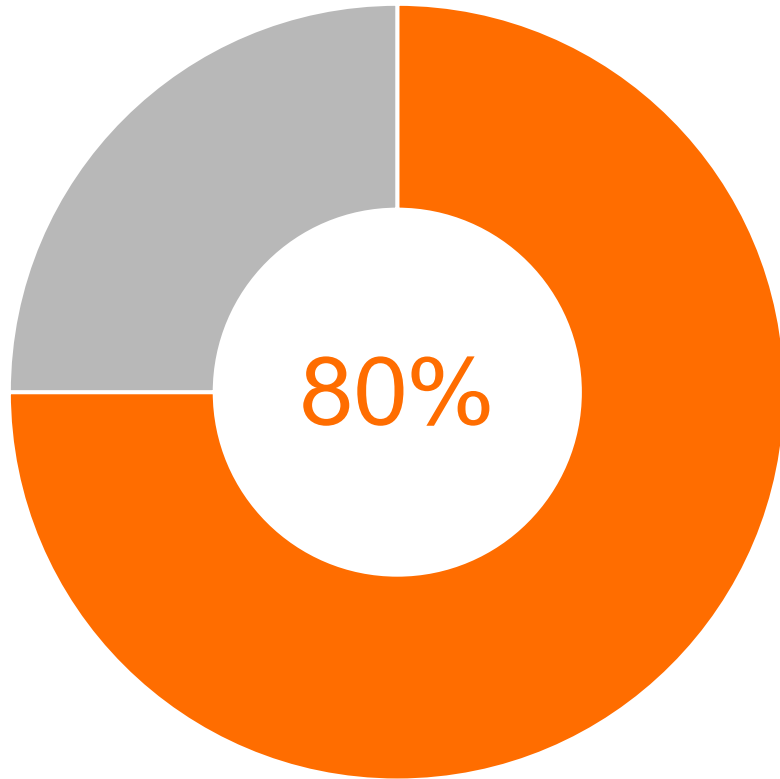
# nintex

## Companies are implementing these processes



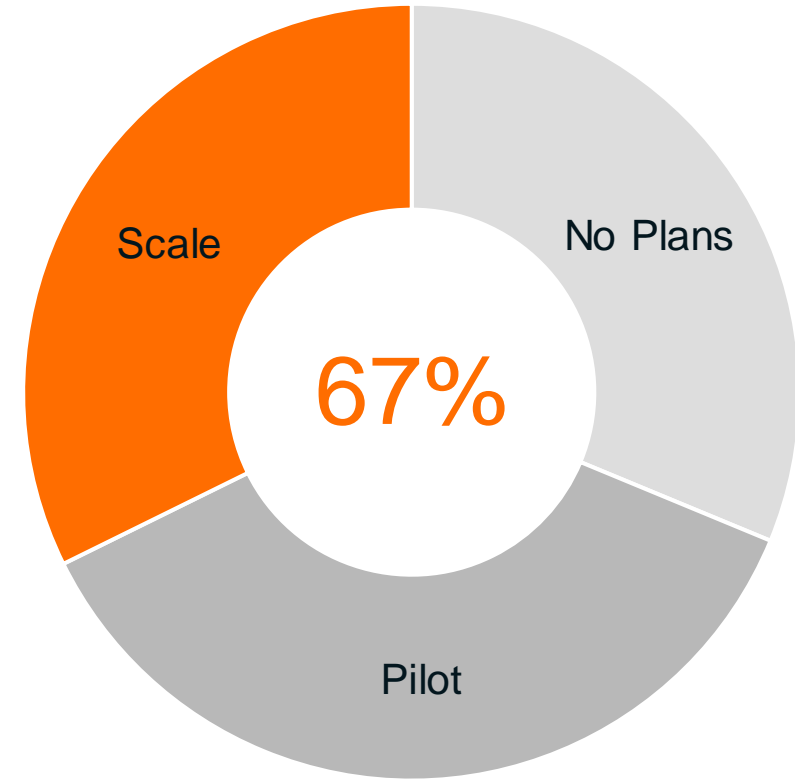
Source: Deloitte, Return to Work Survey 2021

# But can you adapt with flexibility?



Companies have some sort of digital transformation project

Source: Unlocking Success in Digital Transformation, McKinsey, October 2018



But business processes are still largely manual

Source: The imperatives for automation success, McKinsey, August 2020

# nintex

## Powering the return to work

While the return to work brings new and unexpected challenges, organizations who embrace the idea of **permanent flexibility** will thrive.



**Process automation** can help organizations achieve permanent flexibility — improving the employee experience and maximizing productivity





# nintex

## Traditional Approach Reduces Flexibility & Drives Costs

### Discovery & Mapping is Hard

Siloed, difficult to document and little standardization

### Restrictive Approach to Automation

Relies on heavy coding and bespoke AppDev leverages scarce skills

### Time-to-value Slow

Cumbersome multi-month and year-long projects

### Small ROI & Challenges to Scale

Costly consulting, rigid apps, difficult to scale



nintex

# What if you could shift this approach

	Traditional		
Discovery & Mapping	Hard	>	<b>Easy</b> - collaboratively map, improve, and prioritize processes quickly
Automation	Restrictive	>	<b>Agile</b> - low code, drag and drop, powerful, dozens of connectors
Time-to-value	Slow	>	<b>Fast</b> - implement in days to weeks, built for constant change
ROI	Poor	>	<b>Affordable</b> - scalable, easy-to-update, low total cost of ownership



# Nintex: Easy to Use. Powerful. Complete.

## Nintex Promapp®

**Discover & Map**  
business processes  
with tools, process  
owners and participants

## Nintex Forms & Mobile Apps

**Design**  
sophisticated forms  
for all stakeholders  
in office or on-the-go

## Nintex Workflow

**Automate**  
advanced business  
processes for people,  
data, and documents

## Nintex RPA

**Drive**  
speed and volume by  
mimicking most human-  
computer interactions

## Nintex DocGen®

**Create**  
documents with key  
data and automation  
quickly and easily

## Nintex AssureSign

**eSign**  
documents with  
signature-based  
workflows

## Nintex Analytics

**Optimize**  
automation performance  
and gain insight with  
process intelligence

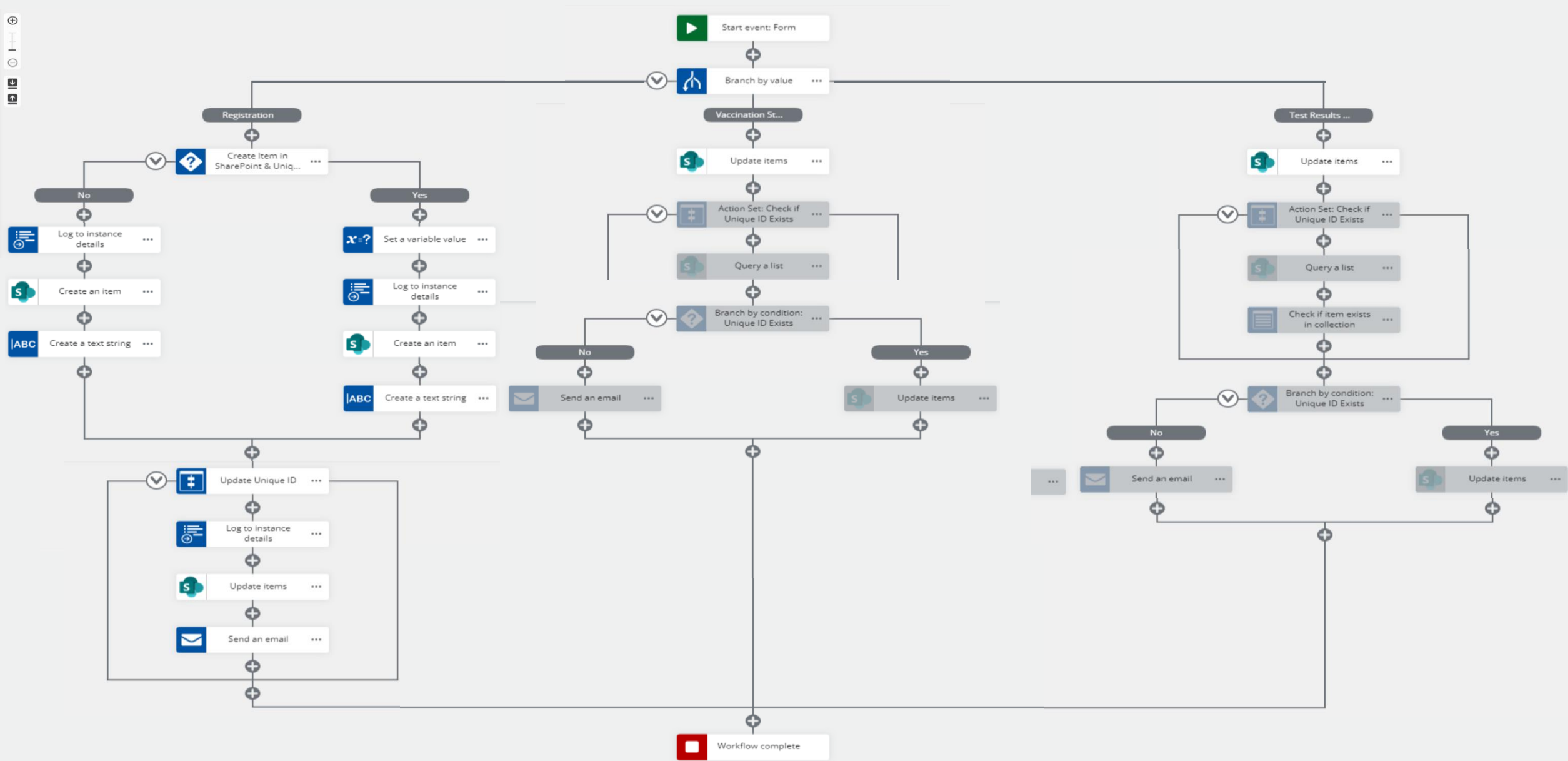


# nintex

## **Example: COVID-19 Vaccination Monitoring**



# Example: COVID-19 Vaccination Monitoring





# Key Takeaways

**Return to work appetite is higher with executives than employees**

**Ecosystem surrounding COVID-19 is complex and changing**

**Companies need to address key processes to mitigate risk**

**Complexity drives a need for permanent flexibility**

**Permanent flexibility is empowered with process automation**



**Thank you**

For more information:

[Erik.Hille@Nintex.com](mailto:Erik.Hille@Nintex.com)

